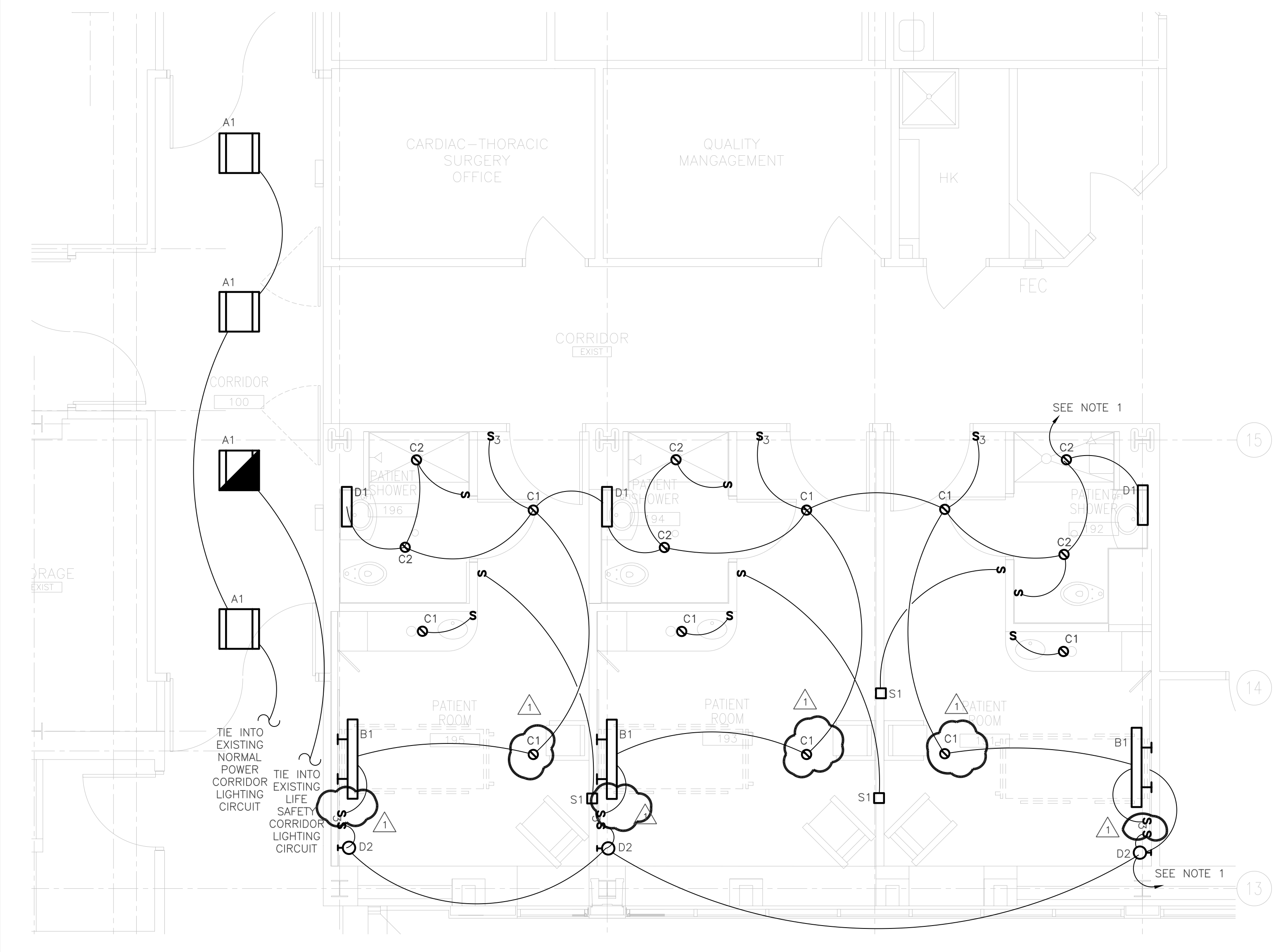
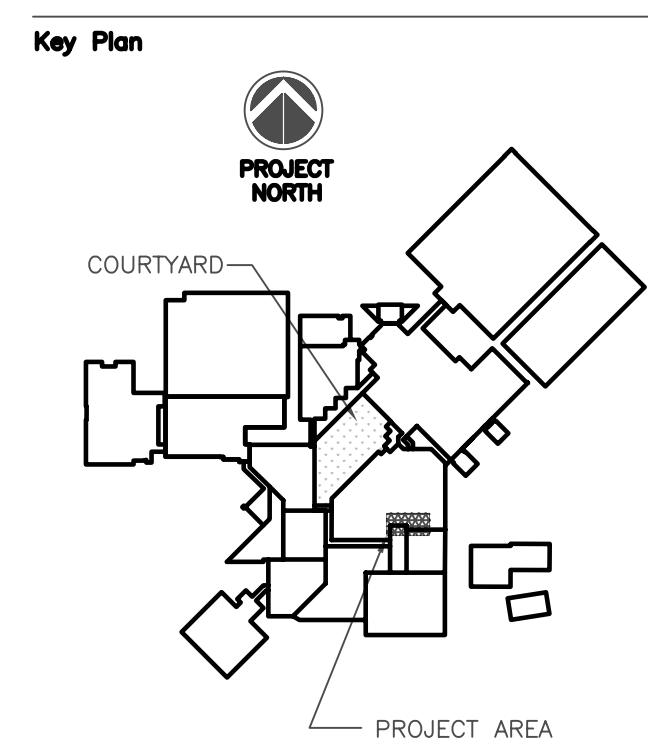
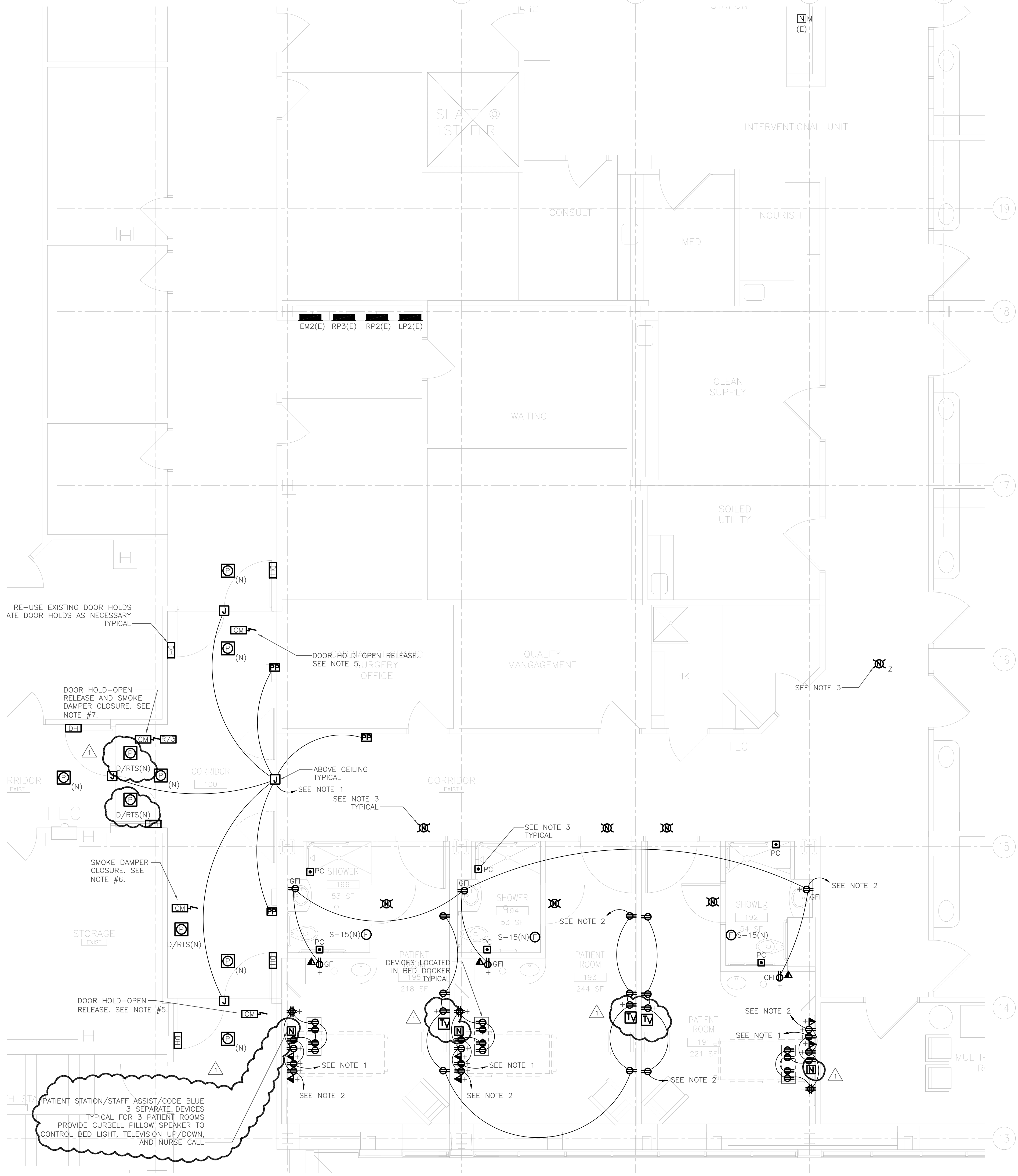


LIGHTING FIXTURE SCHEDULE		LIGHT SOURCE:		MOUNTING:		LAMPS		WATTS / VOLTS		REMARKS
TYPE	DESCRIPTION	MANUFACTURER	CATALOG NUMBER	LIGHT SOURCE	MOUNTING:	QTY.	TYPE	WATTS	VOLTS	
A1	2' X 2' LAY-IN INDIRECT/DIRECT FLUORESCENT WITH PERFORATED LAMP SHIELD AND MATTE SATINE WHITE FINISH.	LITHONIA	2AVG317MDRMVOLTGEB10	F	R	3	MDR	17	60	MVOLT
B1	4' LONG OVER BED LIGHT FIXTURE WITH UP/DOWN LIGHTING, READING LIGHT, NIGHT LIGHT, AND WHITE FINISH.	HEALTHCARE LIGHTING	HPW24120TBEL22S4LEDBDFW	F	W	4	T8	32	128	MVOLT
C1	6" DIAMETER COMPACT FLUORESCENT DOWNLIGHT WITH OPEN REFLECTOR AND STANDARD ELECTRONIC BALLAST.	GOHAM	AF1/32TRT6ARMVOLTGEB10	CF	R	1	TRT	32	32	MVOLT
C2	6" DIAMETER COMPACT FLUORESCENT SHOWER LIGHT WITH DROP OPAL LENS.	GOHAM	LGF1/26TRT8RW73MVOLT	CF	R	1	TRT	32	32	MVOLT
D1	OVER MIRROR LIGHT, FULLY GASKETED AND SUITABLE FOR WET LOCATIONS.	HALO	H2524	F	W	1	T4	100	100	120
D2	DECORATIVE WALL SCONCE LIGHT FIXTURE WITH GLASS DIFFUSER AND SILVER POWDER-COATED LAMP BODY.	FLOS-PIPERITA	A4796009C	I	W	1	E27	100	100	120
S1	COMPACT FLUORESCENT SINGLE FACED PATIENT NIGHT LIGHT.	ALKCO	104	CF	W	1	PLS	4	4	120



2 PARTIAL FIRST FLOOR LIGHTING PLAN
 E200 1/4" = 1'-0"

- NOTES:
- ELECTRICAL CONTRACTOR SHALL CIRCUIT NEW NORMAL POWER DEVICES TO NORMAL POWER CIRCUIT MADE SPARE DURING DEMOLITION IN EXISTING PANEL RP2 OR RP3.
 - ALL EXISTING EXIT & EGRESS LIGHTING SHALL REMAIN AS EXISTING.



3 PARTIAL FIRST FLOOR POWER - DATA - NURSE CALL PLAN
 E200 1/4" = 1'-0"

- NOTES:
- ELECTRICAL CONTRACTOR SHALL CIRCUIT NEW 120V CRITICAL POWER DEVICES TO EXISTING 120V, 20A/1P CIRCUIT MADE SPARE DURING DEMOLITION IN EXISTING PANEL EM1, EM2, OR EM3. SEE E100 FOR PANEL LOCATIONS.
 - ELECTRICAL CONTRACTOR SHALL CIRCUIT NEW 120V NORMAL POWER DEVICES TO EXISTING 120V, 20A/1P NORMAL POWER CIRCUIT MADE SPARE DURING DEMOLITION IN EXISTING PANEL RP2, RP3, OR LP2. SEE E100 FOR PANEL LOCATIONS.
 - ALL NEW NURSE CALL DEVICES SHALL MATCH RAULAND BORG RESPONDER 4000 NURSE SYSTEM AND BE TIED INTO EXISTING MASTER STATION LOCATED
 - ELECTRICAL CONTRACTOR SHALL PROVIDE CONDUIT TO ACCESSABLE CEILING ONLY FOR ALL TELE/DATA & NURSE CALL DEVICES. ALL TELE/DATA & NURSE CALL WIRING BY OTHERS.
 - DOOR HOLD-OPENS SHALL RELEASE UPON ACTIVATION OF THE SMOKE DETECTOR LOCATED ON EITHER SIDE OF THE SMOKE DOORS.
 - SMOKE DAMPER SHALL CLOSE UPON ACTIVATION OF THE ASSOCIATED DUCT MOUNTED SMOKE DETECTOR. COORDINATE SMOKE DAMPER LOCATION WITH MECHANICAL CONTRACTOR.
 - DOOR HOLD-OPENS SHALL RELEASE AND SMOKE DAMPERS SHALL CLOSE UPON ACTIVATION OF THE SMOKE DETECTOR LOCATED ON EITHER SIDE OF THE SMOKE DOORS. COORDINATE SMOKE DAMPER LOCATIONS WITH MECHANICAL CONTRACTOR.

It is the responsibility of the Construction Manager/General Contractor and all Sub-Contractors to verify all dimensions and accept conditions of prior work by related trades before proceeding with any work.

Date 02.16.2009 ISSUE FOR BID
 Drawn By N/A
 Scale AS NOTED

Francis
 Cauffman
 Foley
 Hoffmann

Francis Cauffman
 Foley Hoffmann
 Architects Ltd.
 2120 Arch Street
 Philadelphia, PA 19103
 215-568-8250

Project Title
 ST. MARY
 MEDICAL CENTER
 LANGHORNE-NEWTOWN ROAD
 LANGHORNE, PA 19047

MS-1D
 NEW PATIENT ROOMS

Project Number
 F03-4688.64
 Drawing Title and Number
 ELECTRICAL PLANS